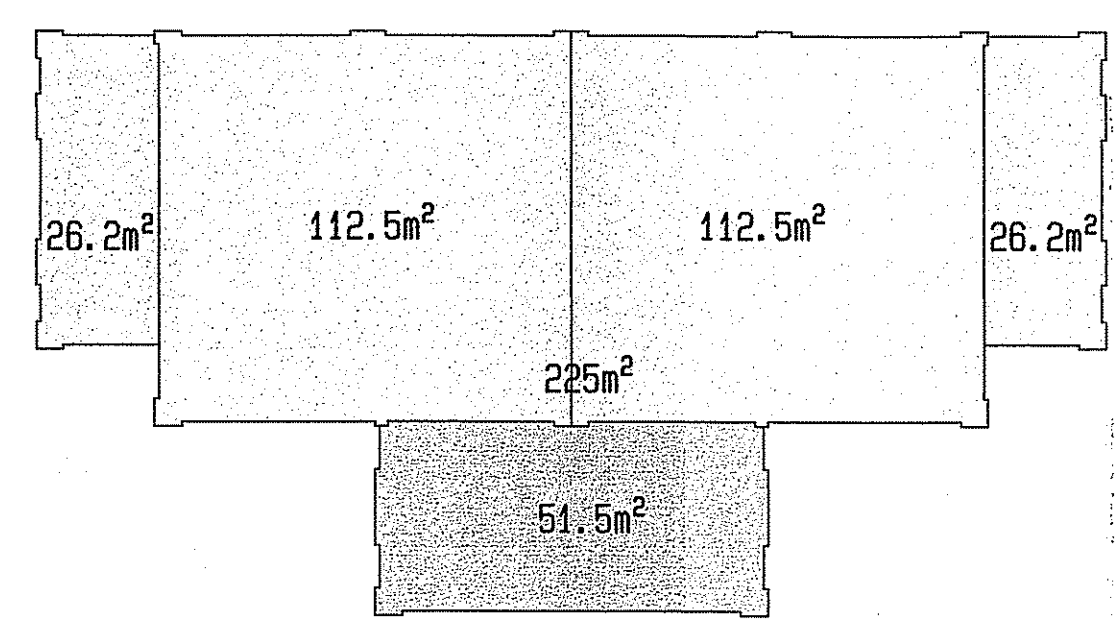
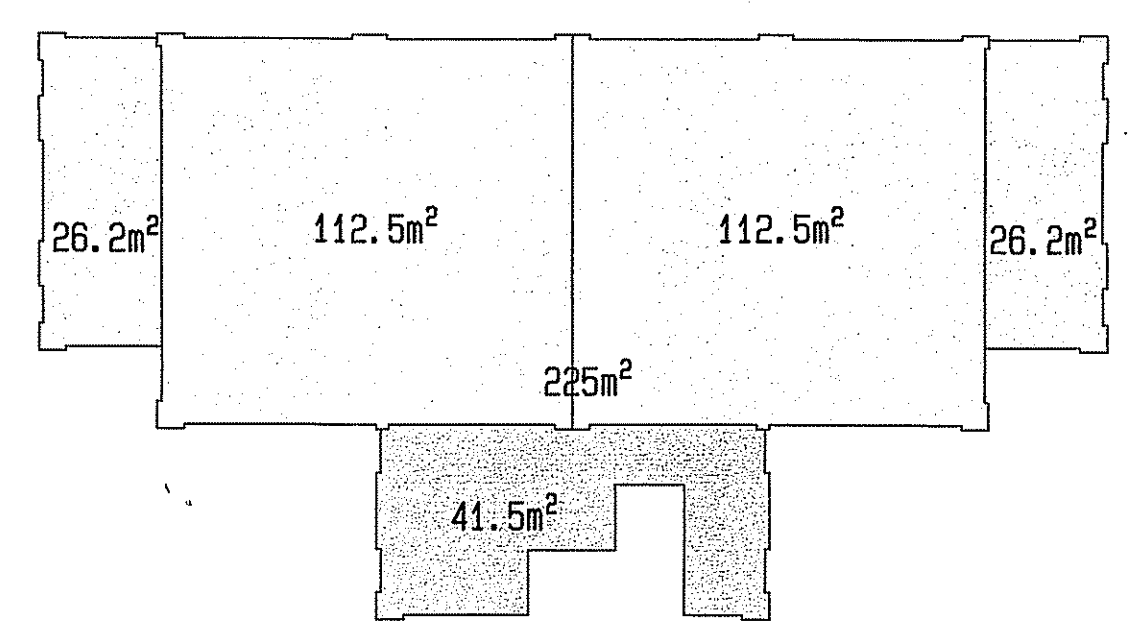


LOWER FLOOR PLAN

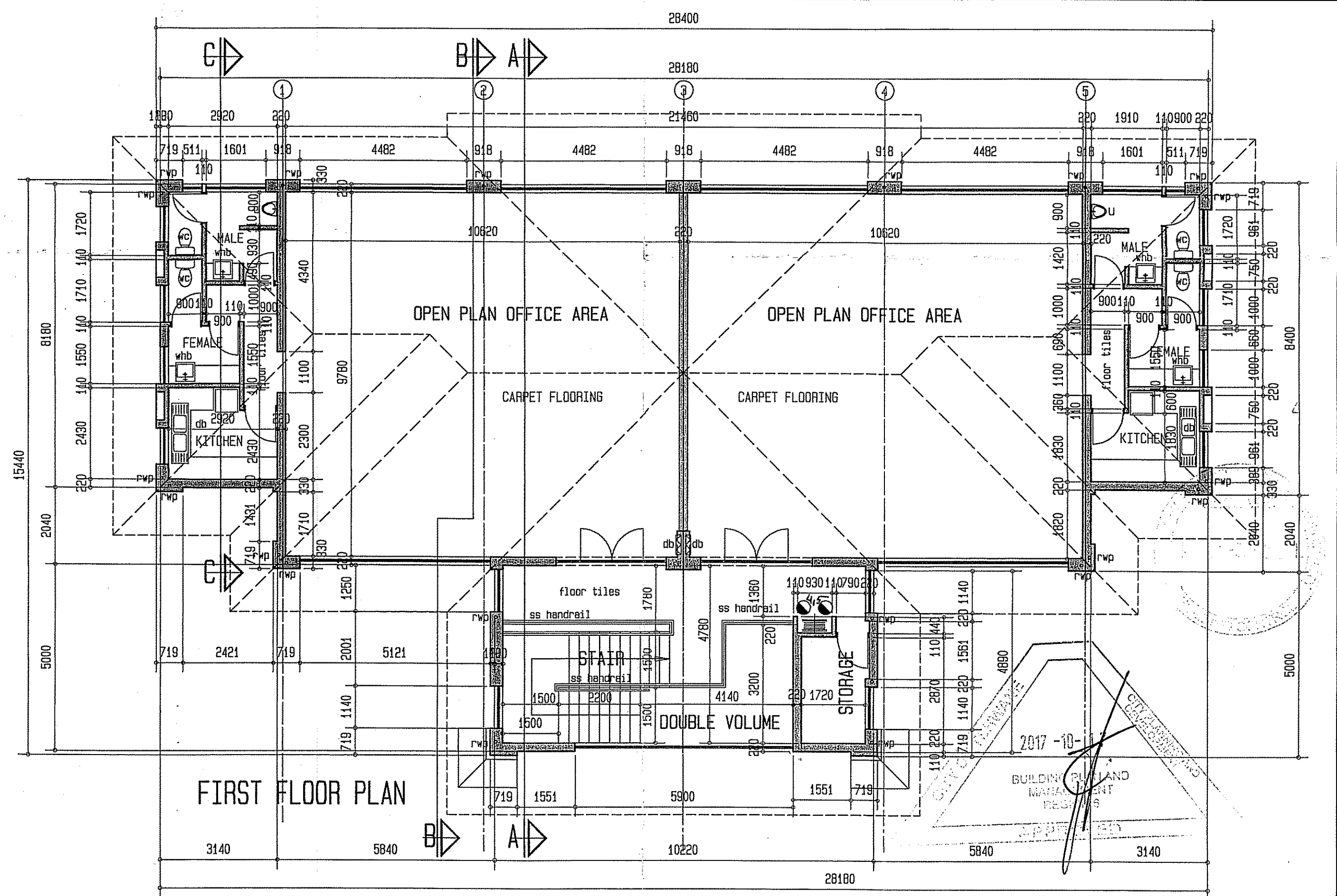
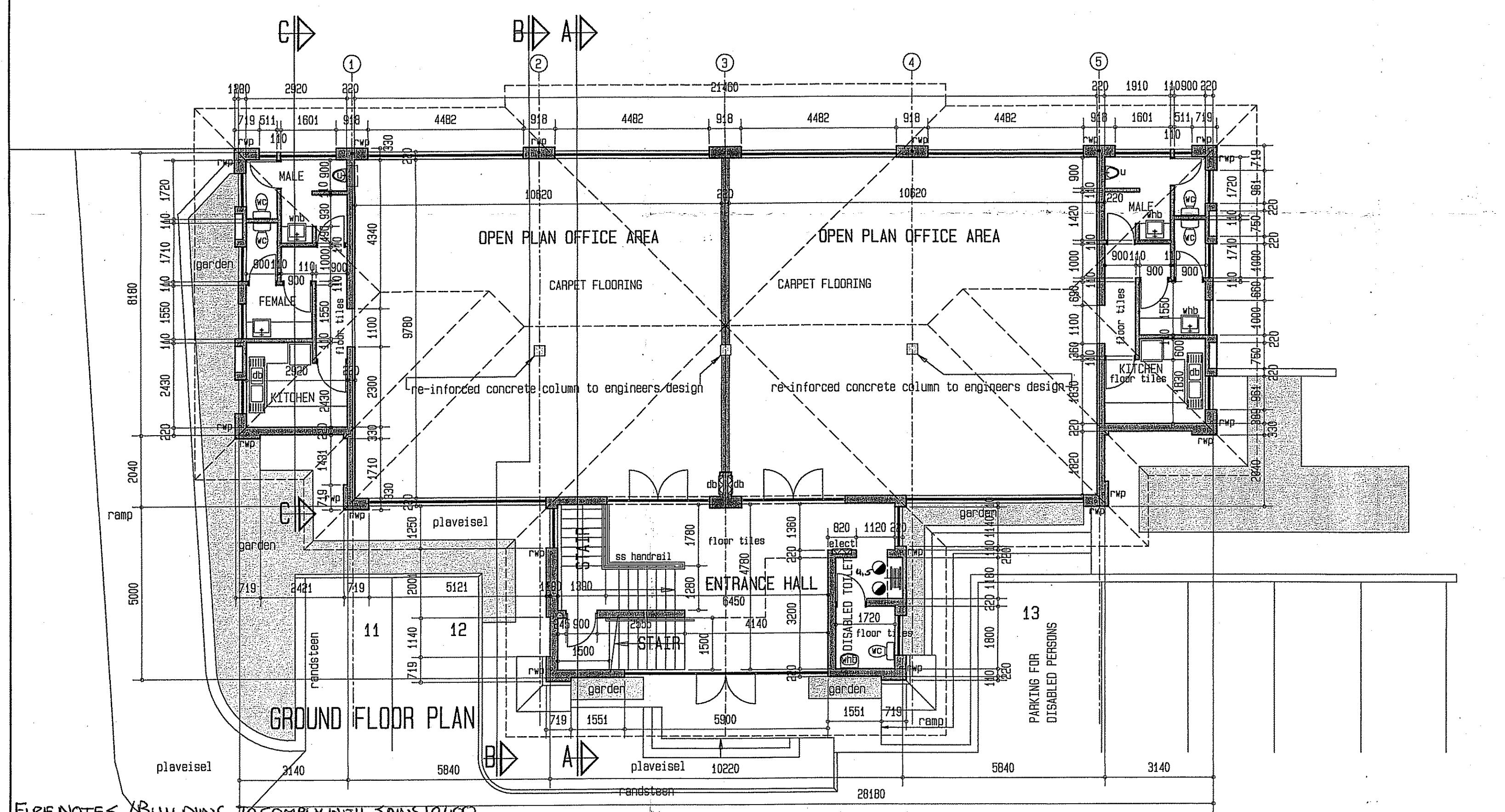


GROUND FLOOR PLAN



FIRST FLOOR PLAN

AREA DIAGRAMS (AREA IS MEASURED OVER WALLS AND DOES NOT REPRESENT THE SECTIONAL AREA)



- FIRE NOTES / BUILDING TO COMPLY WITH SANS 10400**
- T4.2 SAFETY DISTANCES
 - T4.7 FIRE STABILITY OF STRUCTURAL ELEMENTS OR COMPONENTS
 - T4.8 TENANCY SEPARATING ELEMENTS
 - T4.10 PROTECTION OF OPENINGS
 - T4.13 CEILING
 - T4.14 FLOOR COVERINGS
 - T4.16 PROVISIONS OF ESCAPE ROUTES
 - T4.17 EXIT DOORS
 - T4.20 DIMENSIONS OF COMPONENTS OF ESCAPE ROUTES
 - T4.21 WIDTH OF ESCAPE ROUTES
 - T4.23 STAIRWAYS
 - T4.29 MARKING AND SIGN POSTING
 - T4.32 PROVISION AND MAINTENANCE OF FIRE FIGHTING EQUIPMENT INSTALLATION AND FIRE PROTECTION SYSTEM
 - T4.34 HOSE REELS
 - T4.35 HYDRANTS
 - T4.37 PORTABLE FIRE EXTINGUISHERS
 - T4.54 ACCESS FOR FIRE FIGHTING AND RESCUE PURPOSES

MAX 25 PEOPLE ON FIRST FLOOR

HEIN VIVIERS ARCHITECT
 10th AVE 652 GEZINA PRETORIA 0084
 PO BOX 23996 PRETORIA 0031
 TEL/FAX 335 6239 CEL 083 306 1551

PROJECT NO. P245 REG. NR. 3667

PROPOSED ADDITIONAL OFFICE BLOCK ON PORTION 100 (PORTION OF PORTION 3) OF THE FARM TWEE-FONTEIN NO 372-JR. KNOWN AS OLYMPUS BOULEVARD

PROPOSED ADDITIONAL OFFICE BLOCK ON ERF 14 - LOWER FLOOR PLAN - GROUND FLOOR PLAN

DATE: 06 JAN 2017
 CITY OF TSHWANE NEW WORK ADDITIONS APPROVAL ONLY ACT 103/1997 SECTION 6(2)
 FIRE CHIEF FIRE BRIGADE SERVICE

IG Classen Consulting Engineers (Pty) Ltd
 Reg. Nr. 910241
 P. O. Box 12553
 Clubview 0014
 Call: 083 250 6481

SCALE: 1:100	DATE: AUG 2016	NO OF DWGS: 8	DWG. NO.: W2
--------------	----------------	---------------	--------------

26/203016